

## Open Systems Integration



The WebCTRL® system's open architecture and support for industry standards makes integration with third party mechanical and electrical building sub-systems easy.

Our open systems integration platform allows for seamless interconnection to equipment on TCP/IP, EIA-485, or EIA-232 networks. Support for BACnet, Modbus, N2, JBUS, and LonWorks are standard, as well as an extensive list of proprietary protocols.

The WebCTRL system is also capable of supporting multiple protocols over a TCP/IP network, allowing a variety of equipment to be connected directly to the WebCTRL system backbone.

Automated Logic continually develops innovative third party integration solutions to add to our Integration resume.

Contact your [local Automated Logic dealer](#) for a current listing of integration applications or to discuss your custom integration requirements.

**Electric Meters:** Cutler-Hammer, Electro Industries, GE PQM, Power Measurement, United Power, Veris Industries, ASCO, APC, MGE, Siemens, Square D, Setra Systems, Schneider ION, Leviton Series

**Static Transfer Switches and Switchgear:** ASCO, Cyberex, GE Fanuc, Power Paragon, Zenith, Russelectric, Cummins, LayerZero, MGE, United Power

**Computer Room Air Conditioning Units:** Air Technology Systems, Inc. (ATS), APC Network Air, Liebert, Stulz, Data Aire

**Variable Speed Drives:** ABB, Allen-Bradley, Cutler-Hammer, Danfoss, Graham, Square D, Toshiba, Yaskawa, Eaton, ACH

**Lighting:** GE, Square D, Philips, Cooper Controls, PCI, Watt Stopper, Blue Ridge Technologies

**Boilers:** Cleaver Brooks, Fireye, Lochinvar, Weil-McLain, Grundfos, Laars, Reimers Electra Steam

**Chillers:** Carrier, Dunham-Bush, Mammoth, McQuay, Trane, York, Multistack, ClimaCool

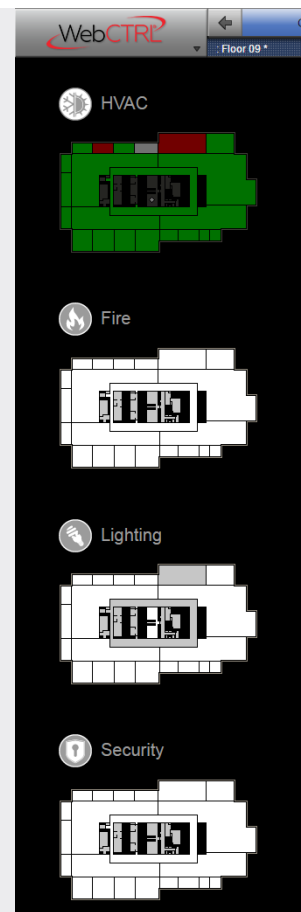
**Fire Systems:** Edwards EST3, Siemens Fire Finder, Simplex, Kidde, Honeywell Notifier

**Fume Hood Control:** Phoenix, Laboratory Control Systems, Tek-Air, TSI, Triatek

**Generators:** Caterpillar, Cummins/Onan, Mammoth, Detroit Deisel, Kohler

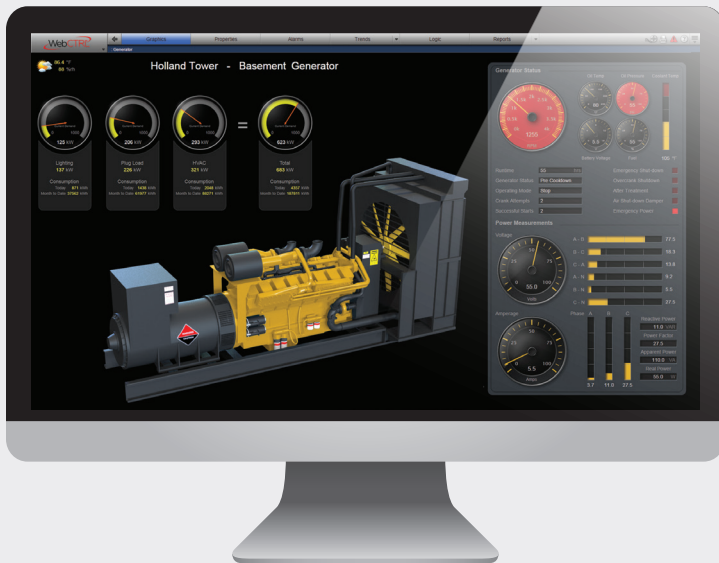
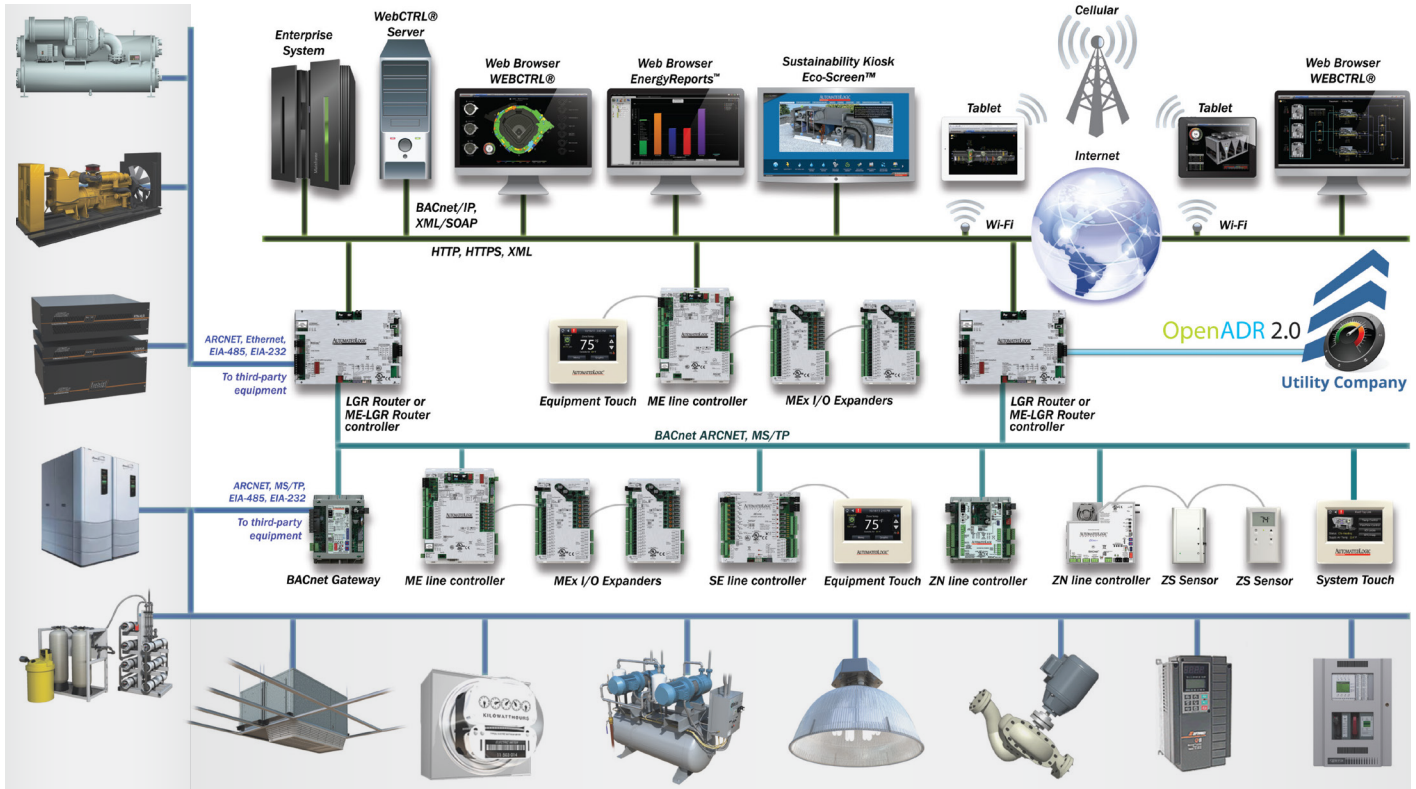
**UPS Monitoring:** MGE, Powerware, APC, Liebert, Piller

**Tank Monitoring:** Veeder Root, Earthsafe





# Open Systems Integration Architecture



The WebCTRL® building automation system gives you the ability to understand your building operations and analyze the results. The WebCTRL system integrates environmental, energy, security and safety systems into one powerful management tool that allows you to reduce energy consumption, increase occupant comfort, and achieve sustainable building operations. Our web-based platform allows building managers to control and access information about their HVAC, lighting, central plant and critical processes on premises or remotely at any time of day.

All trademarks used herein are the property of their respective owners.

1150 Roberts Boulevard, Kennesaw, Georgia 30144  
770-429-3000 Fax 770-429-3001 | [www.automatedlogic.com](http://www.automatedlogic.com)



We make data **big.**™

Next level building automation engineered to help you make smart decisions.